



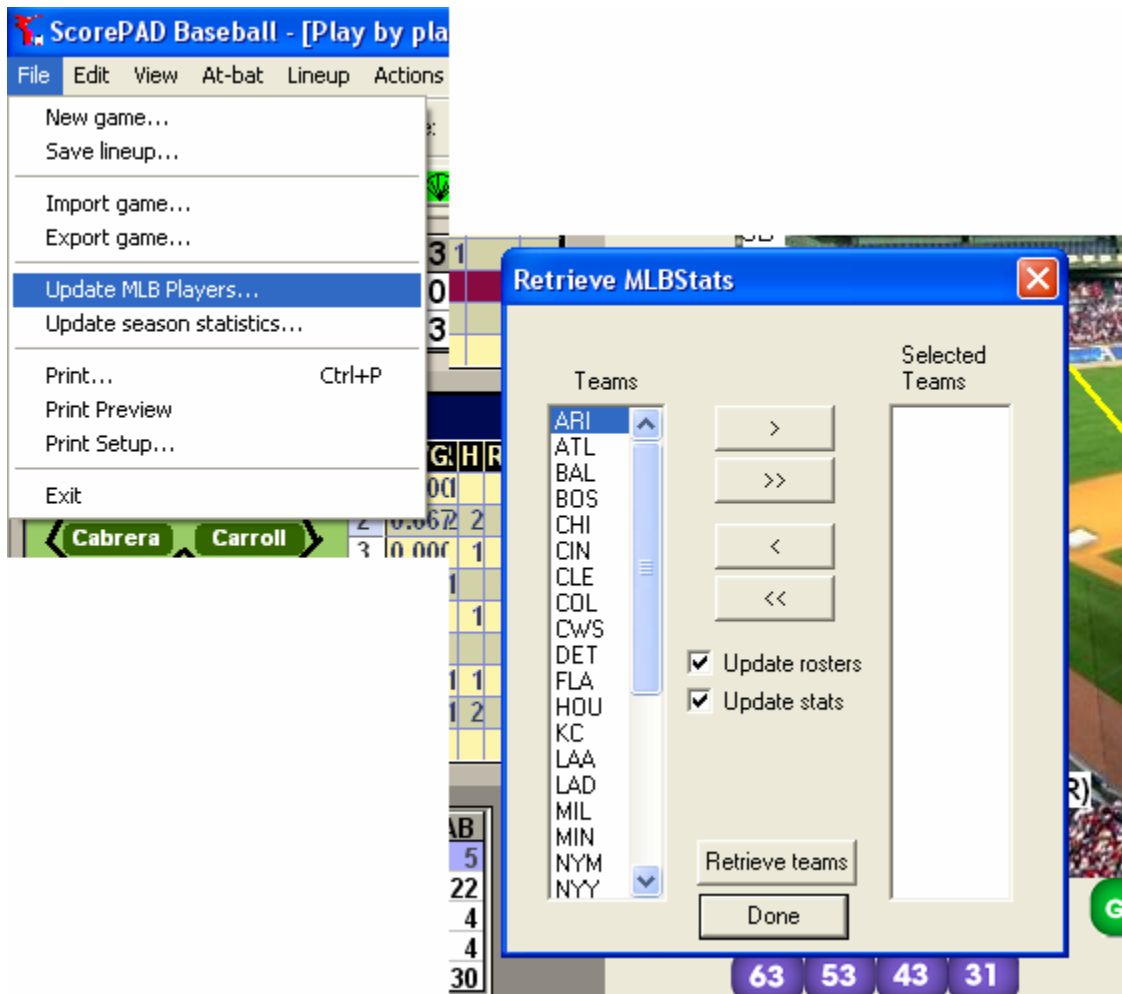
ScorePAD Desktop Scoring Manual

Table of Contents

Loading Rosters	page 2
Starting a Game	page 3
Starting Lineups	page 3
Scoring Plays	page 4
Advance Runners	page 5
Substitutions	page 6
Undo Substitutions	page 7
Other Tips	page 8

Loading Rosters (For MLB Stats Subscribers)

- Download rosters before every game from the Roster view in ScorePAD (Should be available around 7 am every day)
- Click on File
- Click on Update MLB Players
- Use the single arrow to bring over the two teams for today's game or the double arrow to bring over the entire league
- Make sure update rosters and update stats are selected
- Click to retrieve teams
- Press done when it reads that the teams have been retrieved
- Rosters and statistics will be up-to-date after this step is complete



Starting a Game

- Open up ScorePAD and click on the Game Scoring View
- Under the Game Scoring View go to “File”
- Under “File” then select “New Game” – that will take you to “Game Setup”
- Using the drop down menu select both the visitor and home teams
- Click on the Parameters button
- If scoring an A.L. game select 10 players for both the visiting and home teams. Check the DH may be used box. If scoring an N.L. game select 9 players for both and make sure the DH box is unchecked
- Enter your information then click “OK” and then “OK” again (feel free to enter umpires, game time, etc.)

Starting Lineups

- Left click inside the box under each batting order slot to begin entering lineup
- Change a players position by also left clicking the box and selecting the correct position from the drop down menu
- Once both lineups are entered you are able to begin scoring your game
- You may want to save lineups for the next new game by selecting “Save Lineup” under the file menu

	1	2	3	4	5	6	7	8	9	R	H	E	L	RISP
Angels										0	0	0	0	0
Athletics										0	0	0	0	0

LAA - 0

	AVG	HR	RBI	#	Player	P
1	.330	3	58	9	Chone Figgins	3
2	.322	5	39	47	Howie Kendrick	2
3	.000				Unknown	
4	.000				Unknown	
5	.000				Unknown	
6	.000				Unknown	
7	.000				Unknown	
8	.000				Unknown	
9	.000				Unknown	

OAK - 0

	AVG	HR	RBI	#	Player	P
1	.000				Unknown	
2	.000				Unknown	
3	.000				Unknown	
4	.000				Unknown	
5	.000				Unknown	
6	.000				Unknown	
7	.000				Unknown	
8	.000				Unknown	
9	.000				Unknown	

Scoring Plays

There are three techniques for scoring. You can use any one or any combination of the three methods. Personal preference will dictate which way you enjoy better but using a combination of all the methods is advisable.

The three (3) methods are:

1. Using the Command Window to type in the results
2. Using the Hot Buttons to one click play results
3. Using the "OUT" and "ON BASE" buttons and choosing from the list provided

Command Window:

The easiest way to score is typing the result in the command window and then clicking on "GO" or hitting enter on your keyboard. If you at least use this for fielder's choice and double plays it will make everything much less complicated.

Scoring Play	Examples	Scoring Play	Examples
Fielder choice	FC64	Double play	DP543
Lineout DP	LDP13	Sac Bunt	SB34
Sac Fly	SF7	Error	E6
Groundout	63 or 3u	Flyout	8 or F8
Lineout	L5	Popout	P4
Foulout	2F	Hit Batter	HB

Hot Buttons:

Another great way is to use the hot buttons labeled with all the groundout combinations. For Flyouts, Lineouts, Popouts, Foulouts and Errors: select the descriptive button and then select the position on the field above.

OUT and ON BASE Buttons:

Use this whenever you don't see a hot button or are uncertain of the code used for entering the result of the play.

#6 Brad Wilkerson LF (0 for 4) .000

1	2	3	4	5	6	7	8	9
Kc		4-3			Kc		F7	

BB
1B
2B
3B
HR
KS
KC

MON 0
ATL 8

4-3

DETAIL
ADVANCES

UNDO

In 3 Btr 3
Pitcher: Wright, J. (R)
Pitches: |

Command: | GO

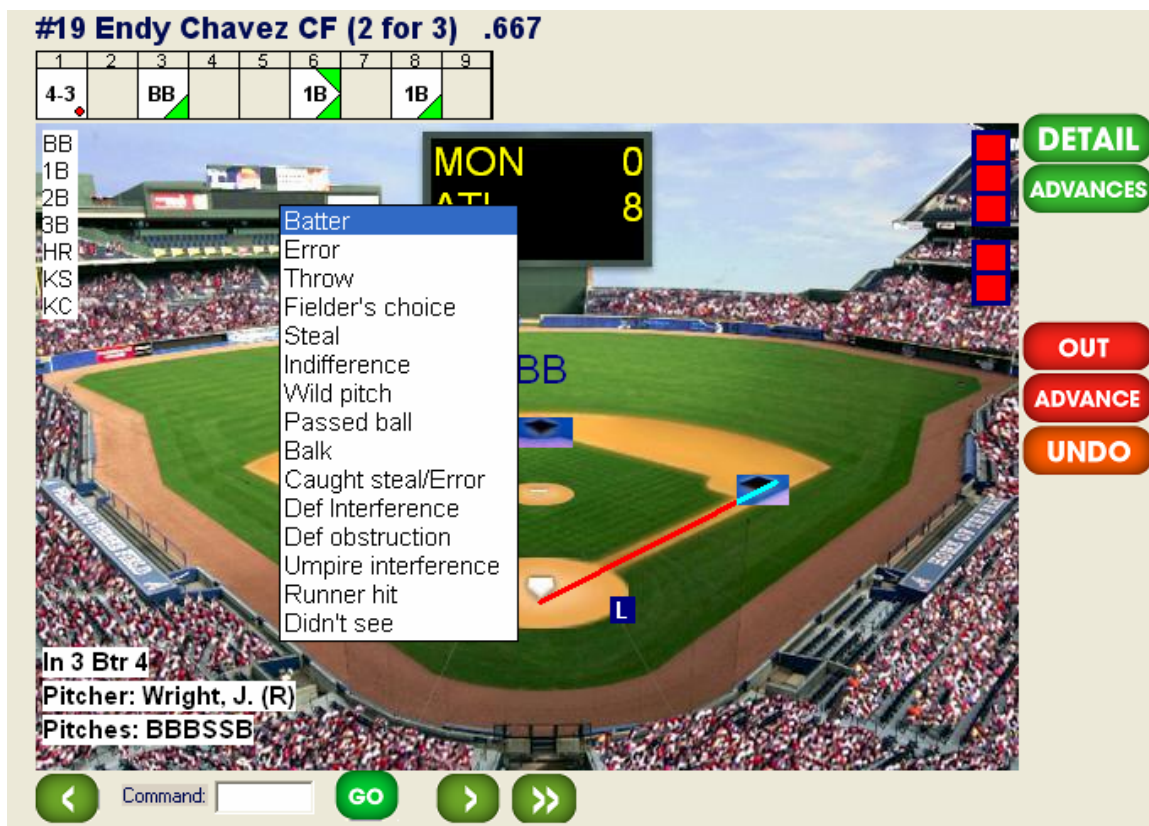
63 53 43 31
3u DP FC 13

MON - 0	ATL - 8							
1	2	3	4	5	6	7	8	9
1	Kc	4-3			Kc	F7		
2	4-3	BB			1B	1B		
3	2B	F7			6-3	F8		
4	F7		P6		Kc		P4	
5	FF3	3u			F8		1B	
6	Kc	Kc			1B	Kc		
7	F7		3u		BB	4-3		
8	BB	F7			DB			
9	SB	1-3			Kc			

Due-Up

Advance Runners

- Right click the base for a pinch-runner, caught stealing or any other out-on-base and simply follow the prompts.
- Left click the and hold while dragging the base runner from one base to another and select the proper corresponding reason for the advance (i.e. stolen base)
- Another method is once a batter gets on base, the “on-base” button will disappear and the “advance” button will appear. Click on “advance” to use the scroll down menu with advancement options for the base runner.



Substitutions

Tip: Make all substitutions straight up by position and then use the drag up and down capabilities to flip them in the batting order for double switches.

- A substitution can be made by left clicking on the player’s name in the lineup box and then selecting the new player from the

roster; or for a defensive change on the name of the replacement player.

- A substitution can also be made from the defensive field view by left clicking on the position and then clicking on the name of the replacement player.
- Lineups can be checked under the Edit menu to make sure your substitutions were successful.

****Note**** Do not use these methods for pinch-runners. Instead right click the runner on base and select Pinch runner from the drop down menu and follow the prompts.

The screenshot displays a baseball game interface with the following components:

- ATL - 4 Lineup:**

#	AVG	HR	RBI	#	Player	Pos	AB	R	H	RBI	SB
1	0.279	15	60	1	Rafael Furcal	SS	4	1	1	1	
2	0.272	3	26	20	Nick Green	2B	4	1	1		
3	0.305	31	93	7	J.D. Drew	RF	3	1	1		
4	0.246	30	96	10	Chipper Jones	3B	3				
5	0.311	9	76	23	Johnny Estrada	C	4				
6	0.278	13	45	19	Adam LaRoche	1B	3	1	1		
7	0.260	29	91	25	Andrew Jones	CF	4				
8	0.296	9	34	26	Charles Thomas	LF	4	2	3	3	
9	0.000			29	John Smoltz	P					
- PHI - 0 Lineup:**

#	AVG	HR	RBI	#	Player	Pos	AB	R	H	RBI	SB
1	0.287	14	73	11	Jimmy Rollins	SS	4				
2	0.298	17	55	27	Placido Polanco	2B	3	1	1		
3	0.301	30	105	53	Bobby Abreu	RF	4	1	1	1	
4	0.273	42	105	25	Jim Thome	1B	4	1	1		
5	0.255	24	84	5	Pat Burrell	LF	3				
6	0.289	18	77	4	David Bell	3B	4				
7	0.000			33	Ricky Ledee	PH	1				
8	0.212	2	14	6	Doug Glanville	CF	3	1			
9	0.125			51	Brian Powell	P					
- Pitcher List:**

#	Pitcher	WLS	IP	H	R	ER	BB	K	HR	HR	WP	BK	TBF	TAB
51	Powell, B.		1.0	0	0	0	0	1	0	0	0	0	3	3
32	Hampton, I	W	8.0	5	0	0	2	5	0	0	0	0	31	29
29	Smoltz, J.		1.0	0	0	0	1	0	0	0	0	0	3	3
**			9.0	5	0	0	2	6	0	0	0	0	34	32
- #33 Ricky Ledee PH (0 for 1):**

Inning	1	2	3	4	5	6	7
1							
- Scoreboard:**

Inning	1	2	3	4	5	6	7	8	9
ATL	F4	5u	3u	F4					
PHI	BB	LS	1B	LS					
ATL	F4	1B	FC	6u					
PHI	P5	K5	1B	TF6					
ATL	F4	BB	F4	5u					
PHI	F4	1u	P4	F4					
ATL	K4	K5	1B	FC	K5				
PHI	3u	1B	FC						
ATL	K4	3u	K5						

Undo Substitutions

- Right click the appropriate batting position to undo the last substitution.
- Right click the batting position also to change or edit player information.

- No two players on the same team can have the same player number during a game.

Other Tips

- To edit earned runs and RBI go to Runs under the Edit menu
- To set the winning, losing and save pitcher after the game you will also find it under the Edit menu
- Use Game Setup under Edit menu to set game times, attendance and umpires
- Another easy way to set a starting lineup is selecting Starting Lineup under the Lineup menu. Just enter the player # and hit tab and it does the rest for you
- Left click on the spot of the field to show the direction of the hit.

